

Pacific Data Products



PACIFIC
DATA PRODUCTS

ENHANCEMENT PRODUCTS FOR LASER PRINTERS

Today, laser printers are the printers of choice for most organizations. They're fast, reliable, and produce high-quality text and graphics, but they're still relatively expensive. And even laser printers can become outdated by new technology or standards. In 1986, Pacific Data Products was formed to solve these problems — to create products and accessories that add power and life to your laser printer.

PACIFIC
DATA PRODUCTS

9125 Rehco Road
San Diego, California 92121
(619) 552-0880 Fax: (619) 552-0889

European Sales Offices

The Netherlands • DCA, Burgemeester Haspelslaan 35, 1181 NB Amstelveen, The Netherlands
Tel (31) 20-475566, FAX (31) 20-453329

France • DCA, 91, rue du Faubourg Saint-Honoré, 75008 Paris, France
Tel (33) 1-42669075, FAX (33) 1-42661560

England • DCA Ltd., 1 Harvingwell Place, 29 32 Mark Road, Hemel Hempstead, Hertfordshire, HP2 7BW, England Tel (44) 442-231414, FAX (44) 442-236540

Switzerland • DCA, Air Center Blandonnet,
1214 Vernier, Geneva, Switzerland Tel (41) 22-412650, FAX (41) 22-410682

European Technical Support

Switzerland • DCA, Air Center Blandonnet,
1214 Vernier, Geneva, Switzerland Tel (41) 22-412650, FAX (41) 22-410682

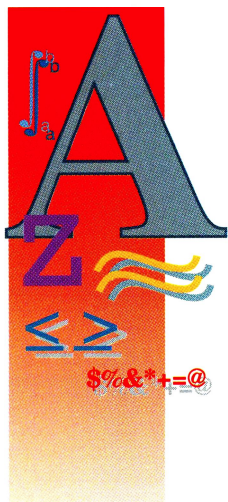
European Production and Distribution

Ireland • D.1 Shannon Industrial Estate, Shannon,
County Clare, Ireland Tel (353) 61-360666, FAX (353) 61-360466

Contents

<i>Four Families of Simply Powerful Solutions</i>	2
<i>Complete Font Library Cartridge</i>	4
<i>25 in One!</i>	6
<i>Hewlett Packard</i>	
<i>IBM</i>	
<i>PacificPage</i>	8
<i>PacificPage Accessories</i>	10
<i>Plotter in a Cartridge</i>	11
<i>Pacific Connect</i>	12
<i>PacificPrint</i>	13
<i>Memory Products</i>	14
<i>Hewlett Packard</i>	
<i>IBM</i>	
<i>TEC Engine Printers</i>	

Four Families of Simply Power



Typographical Products

Complete Font Library Cartridge —
Scalable Outline Font Cartridge for the HP
LaserJet III and IIID printers.

25 in One! III —
Bitmap Font and Symbol-set Cartridge for HP,
IBM and other laser printers.

Headlines in a Cartridge —
Bitmap Display Font Cartridge for HP and
other laser printers. The perfect companion
for *25 in One! III*.

Industry-Standard Emulation Products

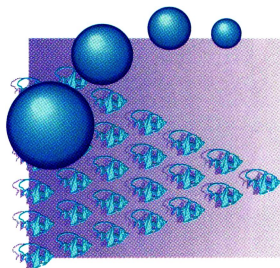
PacificPage and PacificPage P•E —
PostScript Emulation Cartridges for
HP LaserJet Series II, IIP, IID, III,
and IIID printers.

PacificType —
Accessory Scalable Font Cartridge for
use with *PacificPage P•E* (version 4.0
and above), and HP LaserJet IID, III,
and IIID.

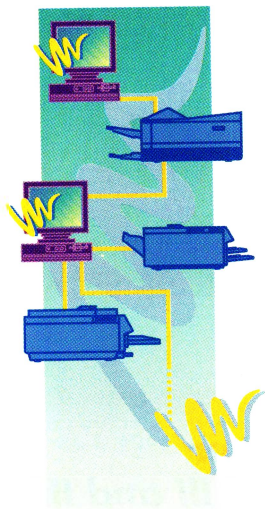
PacificPage P•E for Macintosh —
PacificPage P•E (version 4.0) with *PacificTalk* —
AppleTalk interface module for use with HP LaserJet IIP,
IID, III or IIID and Macintosh computers.

PacificPage XL and PacificPage XL for Macintosh —
High Speed PostScript Language Emulation for HP LaserJet
IIP, III, and IIID printers.

Plotter in a Cartridge and Plotter in a Cartridge P•E —
HP-GL Emulation Cartridges for HP LaserJet Series II, IIP,
IID, III, and IIID printers.



rful Solutions



Connectivity Products

Pacific Connect —

Printer Sharing Device which allows up to five PC and /or Macintosh computers to be connected to one LaserJet printer.

PacificPrint —

Printer Enhancement Software for Novell Networks. Supports Pacific Data's *PacificPage* and *Plotter in a Cartridge*.

Memory Expansion Products

1-2-4 Plus —

Upgradeable Memory Board for HP LaserJet Series II, IID, and other laser printers.

Pacific 4 Memory —

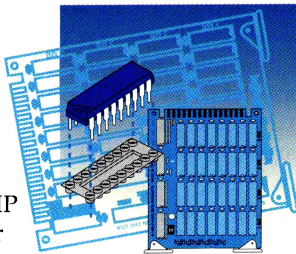
Upgradeable Memory Board for HP LaserJet IIP, III, and IIID printers.

Pacific T Memory —

Upgradeable Memory Board for Epson, Toshiba, AT&T, NCR, Mannesmann Tally, and Packard Bell laser printers.

LP Memory —

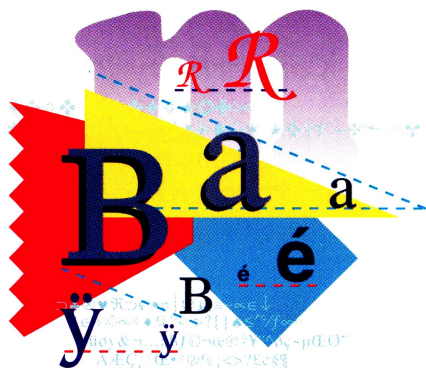
Upgradeable Memory Board for IBM LaserPrinter 4019 and 4019E printers.



Lifetime Warranty

All cartridge, board, and device products are covered by a full lifetime warranty.

Complete Font Library Cartridge



All the Fonts You'll Ever Need for the LaserJet III and IIID!

To make a strong first impression choose the *Complete Font Library Cartridge*—a scalable outline font cartridge for the HP LaserJet III and IIID printer. The cartridge is packed with a variety of 51 typestyles to help you create documents unique in message and style. The *Complete Font Library Cartridge* uses HP's standard resident scaling feature, Intellifont, so you can scale the fonts from 0.25 to 999.75 point, in quarter point increments.

The cartridge offers the same selection and quality of Hewlett-Packard's scalable font cartridges, but at a significantly lower cost. And it's fully compatible with all the major applications that support the LaserJet III and IIID printers and scalable cartridges.

Compatible Printers

HP LaserJet III and IIID

Compatible Software

Compatible with software applications that support LaserJet III and IIID printers and scalable cartridges.* Fully compatible with software printer drivers that support HP scalable cartridges (C2050B and C2050C)

* Also compatible with software that includes AutoFont support.

Custom Printer Drivers

Microsoft Windows 2.x (286/386), Microsoft Windows 3.0*, Microsoft Word 5.0/5.5, Ventura Publisher 2.0/3.0**, WordPerfect 5.1, applications for the Windows environment including Excel, PageMaker, Word for Windows, Ami and many more

* Bitmapped screen fonts included.

** Scalable screen fonts available at no charge.

Font Compatibility

Compatible with downloaded soft fonts and other Pacific Data and HP font cartridges.

AGFA 

25 in One!

172 Fonts and Symbols in One Cartridge

Getting a workout switching font cartridges in and out looking for fonts? Then plug *25 in One!* into your laser printer. It's stuffed with 172 bitmapped fonts and symbol sets to handle all of your printing applications.

There are fonts and symbols for general, legal, and technical word processing, presentation graphics, spreadsheet publishing, and more. It also offers full line drawing tools and multiple text fonts for preparing tax forms. For international applications, it supports the complete Roman 8 extended symbol set and has characters, punctuation, and currency symbols for 10 different European languages.

Headlines in a Cartridge

Large Display Fonts for All Applications

The perfect companion for *25 in One!* It provides 18 Helv and Tms Rmn style fonts in sizes up to 48 points. These display size fonts are perfect for advertisements, proposals, presentations and newsletters. *Headlines in a Cartridge* is compatible with the HP LaserJet Series II, IIP, and IID.

Compatible Printers

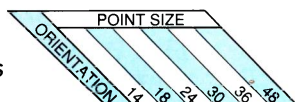
25 in One! III
 HP LaserJet Series II, IIP, IID,
 III and IIID
 25 in One! for IBM
 IBM LaserPrinter 4019 and 4019E

Custom Printer Drivers

25 in One!
 WordPerfect 4.2, 5.0, 5.1; MultiMate
 Advantage II; Windows 286/386,
 Windows 3.0, applications for the
 Windows environment including
 Word for Windows, Excel, Aldus
 PageMaker, Write, and many more;
 Word 3.0, 4.0, 5.0, 5.5, and Works;
 WordStar; Symantec Q&A;
 DisplayWrite 4.2; Ventura Publisher
 2.0, 3.0
 25 in One! for IBM
 Windows 286/386, 3.0; WordPerfect
 5.1; Word 3.0, 4.0, 5.0, and 5.5,
 DisplayWrite 4.2, Ventura Publisher
 2.0, 3.0

International Support

Full Roman 8, ECMA-8, and ISO-7
 international symbol sets. Characters,
 punctuation, and currency symbols
 for U.K., French, German, Spanish,
 Italian, Danish, Norwegian, Swedish,
 Greek, and Latin language



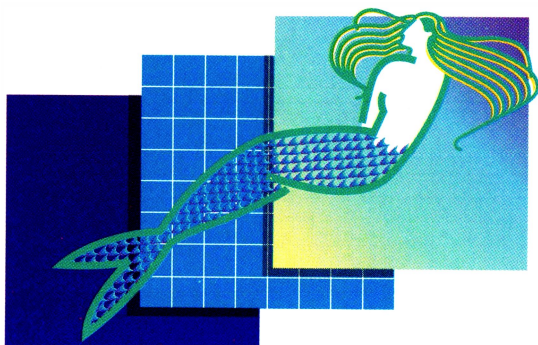
		14	18	24	30	36	48
Helv Style							
Italic	P	•	•	•	•	•	•
Bold	P		•	•	•	•	•
Italic	L	•	•	•	•		
Bold	L		•	•	•	•	•
Tms Rmn Style							
Italic	P	•	•	•	•		
Bold	P		•	•	•	•	•
Italic	L	•	•	•	•		
Bold	L		•	•	•	•	•

Type Styles

	ORIENTATION	POINT SIZE										SYMBOL SETS										EQUIVALENTS		
		3.6	5	7	8	8.5	9.5	10	12	14	16	18	INTL ISO ECMA 8	LEGAL ASCII	ROMAN 7	MATH 8	MATH 8	PI	TAX	PC	HP	HP		
Helv Style																								
Medium	P	•		•				•	•					•										T,U,Z1A
Bold	P			•				•	•	•				•	•									B,F,S2,U,Z1A
Italic	P							•	•					•										Z1A
Medium	L		•		•																			V
Bold	L							•	•					•										V
Tms Rmn Style																								
Medium	P				•			•	•					•										B,F,P,S2,Z1A
Bold	P							•	•	•				•										B,F,P,S2,Z1A
Italic	P							•	•					•										Z1A,S2
Medium	L							•																P
Bold	L							•																P
Italic	L							•																P
Tms Math/Pi	P				•			•													•	•	•	K
Prestige Math/Pi	P				•			•													•	•	•	J
Courier																								
Medium	P								•					•	•									A,C,H,L,Q,S1,Y
Italic	P								•					•										A,C,H,L,Q,S1,Y
Bold	P								•					•										A,C,H,L,Q,S1,Y
Prestige Elite																								
Medium	P				•				•						•									G,J
Bold	P								•						•									D,G,J,M
Italic	P								•						•									D,G,J,M
Medium	L				•				•						•									G,H,M
Bold	L								•						•									D,G,M
Italic	L								•						•									D,G,M
Letter Gothic																								
Medium	P							•		•	•			•										R,N,W
Bold	P								•															E,N
Italic	P								•															E,N
Medium	L							•		•	•			•										N,R,V
Bold	L								•															N
Italic	L								•															N
PRSNATN																								
Bold	P								•	•	•	•			•									R
Bold	L								•	•	•	•			•									R
Line Printer	P								•															• C,F,Y,L
Line Printer	L								•															• A,B,C,L,Y,Z1A
PC Line Draw	P									•														• R
PC Line Draw	L									•														• R
Tax Line Draw	P								•															• T
AFS	P		•											•										PDP Cart.
AFS	L		•											•										PDP Cart.

All portrait fonts can be printed in landscape orientation on printers with automatic font rotation (HP LaserJet IID, IIP, III and IIID and IBM LaserPrinter 4019 and 4019E).

PacificPage



Award-winning PostScript Emulation

There are now several ways to add PostScript capabilities to your HP LaserJet printer.

However, if you want reasonable pricing, high performance, ease-of-use, and guaranteed satisfaction there's only one choice — *PacificPage*.

It's compatible with any application that supports PostScript output and unlike software-based emulation

programs, you don't have to exit the application to print. With its softswitch feature you can switch in and out of PostScript mode directly from your computer. You also get 35 internal scalable typestyles.

PacificPage for the LaserJet Series II now comes with a 2 MB upgradeable memory board at no additional cost!

Compatible Printers

PacificPage P•E
HP LaserJet IIP, IID, III, and IIID
PacificPage
HP LaserJet Series II (not all accessories and options available)

Language Emulation

PostScript, version 51.9

Compatible Computers

IBM Personal Computers
IBM Compatibles
Macintosh Computers (requires PacificTalk option)

Compatible Software

Compatible with application programs that support PostScript output

Interfaces

Parallel and serial

Total Printer Memory Requirement

1.5 MB - PacificPage P•E
2.5 MB - required when used with A4 or legal paper sizes* or PacificTalk
2.5 MB - PacificPage

Fonts

35 Apple LaserWriter IINT equivalent typestyles from Bitstream

Compatible Outline Fonts

Bitstream Typeface Packages for the PC
Bitstream Typeface Library for Macintosh
Adobe type 1 and 3 fonts

Money Back Guarantee

Satisfaction guaranteed or your money back

* When using legal or A4 paper sizes on the LaserJet III, IIID or IID, a legal or A4 paper tray must be used.



PacificPage Typestyles

Courier

Normal, **Bold**, *Italic*, ***Bold Italic***

Swiss 721

Normal, **Bold**, *Italic*, ***Bold Italic***

Swiss 721 Narrow

Normal, **Bold**, *Italic*, ***Bold Italic***

Dutch 801

Normal, **Bold**, *Italic*, ***Bold Italic***

Zapf Calligraphic 801 (Palatino)

Normal, **Bold**, *Italic*, ***Bold Italic***

Geometric 711 (ITC Avant Garde)

Normal, **Bold**, *Italic*, ***Bold Italic***

Revival 711 (ITC Bookman)

Normal, **Bold**, *Italic*, ***Bold Italic***

Century 702 (Century Schoolbook)

Normal, **Bold**, *Italic*, ***Bold Italic***

Chancery 801 (ITC Zapf Chancery)

Medium Italic

Zapf Dingbats



Symbol

αβχδεφγηηθικλμνοπρθστυπωξψζ

PacificPage P•E

Accessories and Options

PacificType

This accessory font cartridge for PacificPage P•E adds 40 additional Bitstream and ITC typestyles to the 35 Apple LaserWriter equivalent typestyles already in the PacificPage P•E cartridge. Printer drivers are included for the cartridge's entire selection of typefaces.

PacificPage P•E for the Macintosh

Includes an AppleTalk interface module that allows you to connect and share any LaserJet IIP, IID, III or IIID printer with your Macintosh.

PacificPage XL and PacificPage XL for Macintosh

PacificPage XL consists of the newest version of our PacificPage P•E cartridge and an accelerator board that includes a RISC-based Intel i960™ KB microprocessor and 2 MB of memory. Just slip the board into the memory slot of any LaserJet IIP, III, or IIID printer and you'll receive output 2 to 8 times faster than competitive products.

PacificPage XL for Macintosh includes our AppleTalk interface module called *PacificTalk*.

PacificType Typestyles

ITC Garamond®

Book, *Book Italic*, **Bold**,
Bold Italic

Zapf Humanist (Optima)

Normal, *Italic*, **Bold**, **Bold Italic**

Zurich™ (Univers®)

Roman, *Italic*, **Black**,
Black Italic

Goudy Old Style®

Roman, *Italic*, **Bold**, **Extra Bold**

Baskerville

Roman, *Italic*, **Bold**, **Bold Italic**

Futura® Book, **Extra Black**

Futura Light

Light, *Light Italic*, Medium Condensed

Futura Black®

Swiss Monospaced Roman

Swiss Light (Helvetica Light)

Light, *Light Italic*, **Black**,

Black Italic

Slate

Medium, *Medium Italic*,

Bold, **Extra Bold**

University® Roman

Cloister® **Black**

Bitstream Cooper® Black

Blippo

Park Avenue™ Roman

Plotter in a Cartridge



Fast HP-GL Emulation for Laser Printers

Plotters are famous for producing precise, high-resolution output. But they're slow. Laser printers are fast, but they don't produce the detailed, complex graphics of plotters. There is a solution — *Plotter in a Cartridge* for HP LaserJet printers. Just plug in the cartridge and you get the speed of a laser printer and the graphics capabilities of a plotter.

Immediately improve the quality of your graphics with resolution up to 1/300 of an inch. And boost output up to 100 times faster than pen plotters or PC-based software emulations.

Plotter in a Cartridge Versions

Plotter in a Cartridge
HP LaserJet Series II
Plotter in a Cartridge P•E
HP LaserJet IIP, IID*, III, and IIID*

Required Memory

1.5 MB

Interfaces Supported

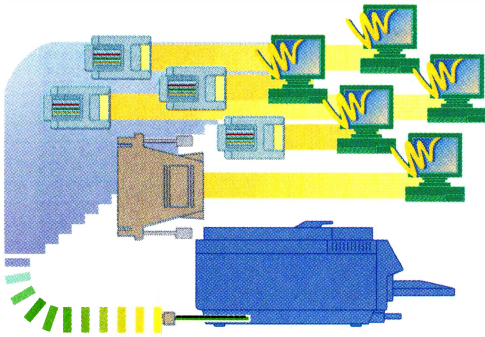
Serial (RS232) and parallel
(Centronics)

Media Sizes Supported

Letter, Legal, Executive, USA
A3, European A4, and COM-10,
Monarch, C5, and DL envelopes

* Duplexing feature not supported
in plotter mode.

Pacific Connect



LaserJet Printer Sharing Device

Shouldn't everyone in your office have access to the high quality output of a Hewlett-Packard LaserJet printer? Now they can with *Pacific Connect*.

Simply install *Pacific Connect* into the I/O slot of your LaserJet and it allows up to 5 PCs or 4 Macintoshes, in any combination, to share a single Hewlett Packard LaserJet Series II, IID, III, or IIID. *Pacific Connect* provides full Macintosh compatibility with MacJet and/or MacPage printer drivers.

The *Pacific Connect* board works automatically and eliminates the need for mechanical switch boxes or software. Print jobs are placed in the large user-upgradeable buffer memory of 256k or 1.25 MB, and printed in the order that they are received.

Compatible Printers

HP LaserJet Series II, IID, III, and IIID

Inputs

Four RS-232 serial inputs and one centronics parallel input

Connectors

Four RJ-11 modular connectors (serial) and industry standard 36-pin centronics connector (parallel)

Baud Rate

Each serial port can be independently set to a baud rate from 1200 to 115,200

Spooling Buffer

256k* or 1.25 MB of dynamically allocated memory

*User upgradeable to 1.25 MB

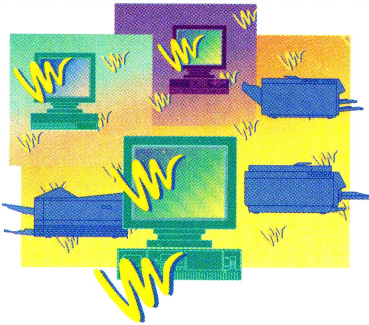
Package Includes:

Pacific Connect board
Two 25 ft. cables (serial)
Two 50 ft. cables (serial)
Two DB-25 to RJ-11 adapters
Two DB-9 to RJ-11 adapters
One Mini Din to RJ-11 Macintosh adapter
Utility software
MacPage PostScript driver
MacJet PCL driver

Emulation Cartridges Supported

PacificPage P•E (4.0 and above)
PacificPage
Plotter in a Cartridge P•E (1.1 and above)
Plotter in a Cartridge

PacificPrint



Printer Enhancement Software for Novell Networks

Striking *PacificPage* PostScript and *Plotter in a Cartridge* HP-GL output. Everyone wants it, but it's not always possible to give everyone on your network a dedicated HP printer with one of our industry-standard emulation cartridges. You don't have to if you have a Novell NetWare local area network (LAN) and *PacificPrint*. It not only lets you easily share printers and switch between HP-PCL mode and our emulation cartridges, but simplifies all network printing operations.

Shortly, you'll be up and running and sending print jobs with familiar NetWare commands. Or just use *PacificPrint's* pop-up print utility *QueueIT!*, to select printers or change print options, all from within your application software.

Give everyone the ability to produce professional-looking

documents with *PacificPage* or *Plotter in a Cartridge*. No matter where the printers are located on your network.

Compatible Printers

Parallel and Serial printers*

Compatible Computers and Operating Systems

IBM PC/XT/AT and compatibles

IBM PS/2 Series

DOS 3.1 or higher

Novell NetWare - 2.1 or higher

Novell NetWare 386 - 3.0 or higher

Novell NetWare ELS II

Computer Memory Requirements

13k for workstations acting as print server.

Utilities (when loaded into memory):

8k - Qslim

24k - Q It

24k - PSP-Con

Emulation Cartridges Supported

PacificPage (2.58 or higher)

PacificPage P.E (3.00 or higher)

Plotter in a Cartridge (18 or higher)

Plotter in a Cartridge P.E

* With emulation cartridges, parallel interface must be used. *PacificPrint* offers polled and interrupt driven printer control options.

Memory Products

Upgradeable Printer Memory Boards

Over time, laser printing requirements grow because of increasingly powerful software applications or more users. But with a *1-2-4 Plus*, *Pacific 4 Memory*, *LP Memory*, or *Pacific T Memory* upgradeable memory board it's easy to keep pace.

Simply increase the power of your laser printer by adding more printer memory. And you don't have to buy a new board or throw away the old one as your needs grow — just add more memory chips.

1-2-4 Plus

For HP, Canon, and Olivetti

- Compatible with HP LaserJet Series II, IID, Canon LBP-8II and LBP- 8IIR, Olivetti PG-108
- The *1-2-4 Plus* memory board comes with 0, 1, 2 or 4 MB of memory.* When you're ready to add additional memory (up to 4 MB total), simply install more 1 megabit memory chips.
- Chip speed
1MB x 1 @ 150 nsec or faster

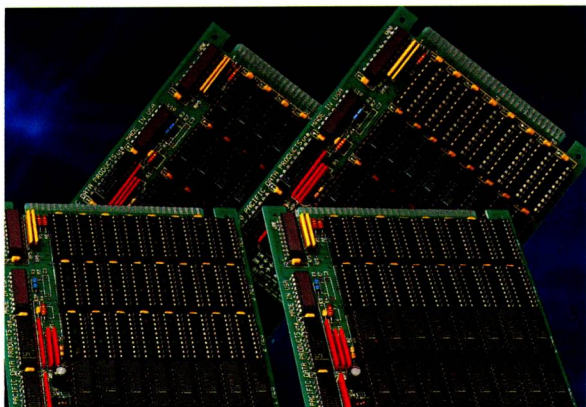
* Not available in 1 MB configuration for IID printers

Pacific 4 Memory

For HP LaserJet IIP, III, and IIID

- Compatible with HP LaserJet IIP, III, and IIID
- Purchase a *Pacific 4 Memory* board with 0, 1, 2 or 4 MB of memory. If your memory needs increase just plug in additional chips.*
- Chip speed
256K x 4 @ 120 nsec or faster

* See your local dealer or call Pacific Data Products about our memory upgrade kit for Pacific 4 memory boards.



LP Memory

*For IBM LaserPrinter
4019/4019E*

- Compatible with IBM Laser-Printer 4019 and 4019E
- Each *LP Memory* board provides you with 1, 2, or 3.5 MB of printer memory. When it's time to upgrade just install additional chips.
- *LP Memory* lets you take full advantage of the IBM Laser - Printer 4019 printer's built in memory manager and printer sharing option.
- Chip speed
256K x 4 @ 120 nsec or faster

Pacific T Memory

For TEC engine laser printers

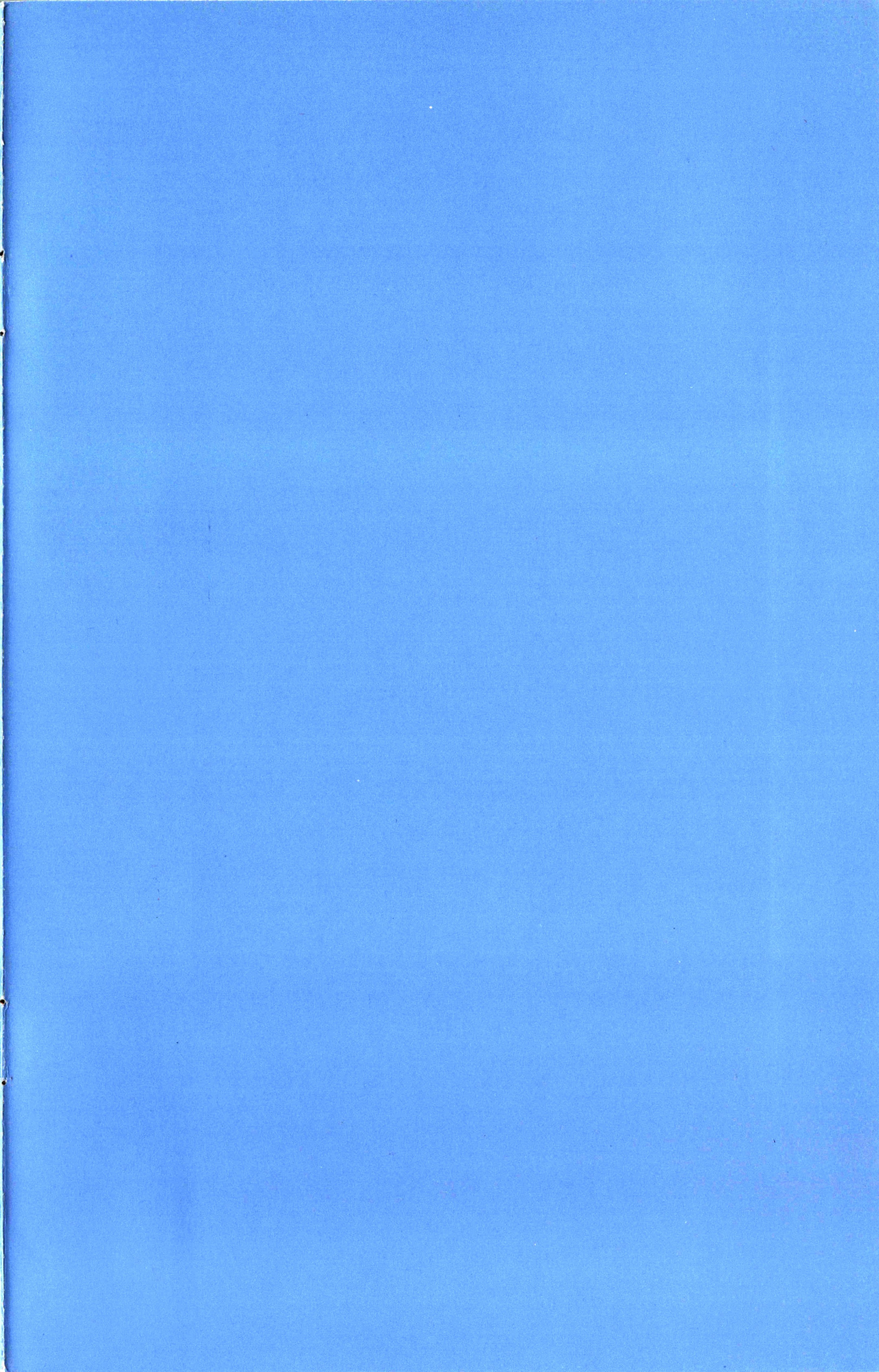
- Compatible with Epson EPL 6000, Toshiba Page Laser 6, AT&T 593, NCR 6435, Mannesmann Tally MT905, Packard Bell PB9500, TEC LB-1305
- The *Pacific T Memory* board increases the standard 512K memory of TEC engine laser printers by 2 to 4 MB of memory. It provides a low cost alternative to expensive boards offered by the printer manufacturer.
- Chip speed
1 MB x 1 @ 120 nsec or faster

PacificPage, PacificTalk, Pacific Connect, Plotter in a Cartridge, 25 in One!, Headlines in a Cartridge, Complete Font Library Cartridge, 1-2-4 Plus, Pacific T Memory, Pacific 4 Memory, LP Memory, and PacificPrint are trademarks of Pacific Data Products, Inc.

Adobe PostScript, Type 1 and Type 3 are registered trademarks of Adobe Systems, Inc., HP, LaserJet, and HP-GL are registered trademarks of Hewlett-Packard Company. Apple, Macintosh and LaserWriter are registered trademarks of Apple Computer, Inc. IBM and LaserPrinter 4019 are registered trademarks of International Business Machines Corporation. MacJet is a trademark of COMPUTER applications Inc. PhoenixPage is a registered trademark of Phoenix Technologies Ltd. © 1987, 1988 Phoenix Technologies Ltd. Scalable type outlines are licensed from Agfa Corporation. Intellifont®, Type Director®, CG Bodoni®, and CG Omega® are registered trademarks, and Shannon™ is a trademark of Agfa Corporation. ITC Benguiat®, ITC Bookman®, ITC Souvenir®, and ITC Zapf Dingbat® are under license from and registered trademarks of International Typeface Corporation. Unifers™ is a trademark of Linotype AG and/or its subsidiaries. Letraset® is a registered trademark and Recue™ is a trademark of Esselte Pendaflex Corporation.

All other trade names referenced are the trademarks or registered trademarks of the respective manufacturer.

© 1991 Pacific Data Products, Inc.



PACIFIC
DATA PRODUCTS

9125 Rehco Road
San Diego, California 92121
(619) 552-0880 Fax (619) 552-0889

011916 A